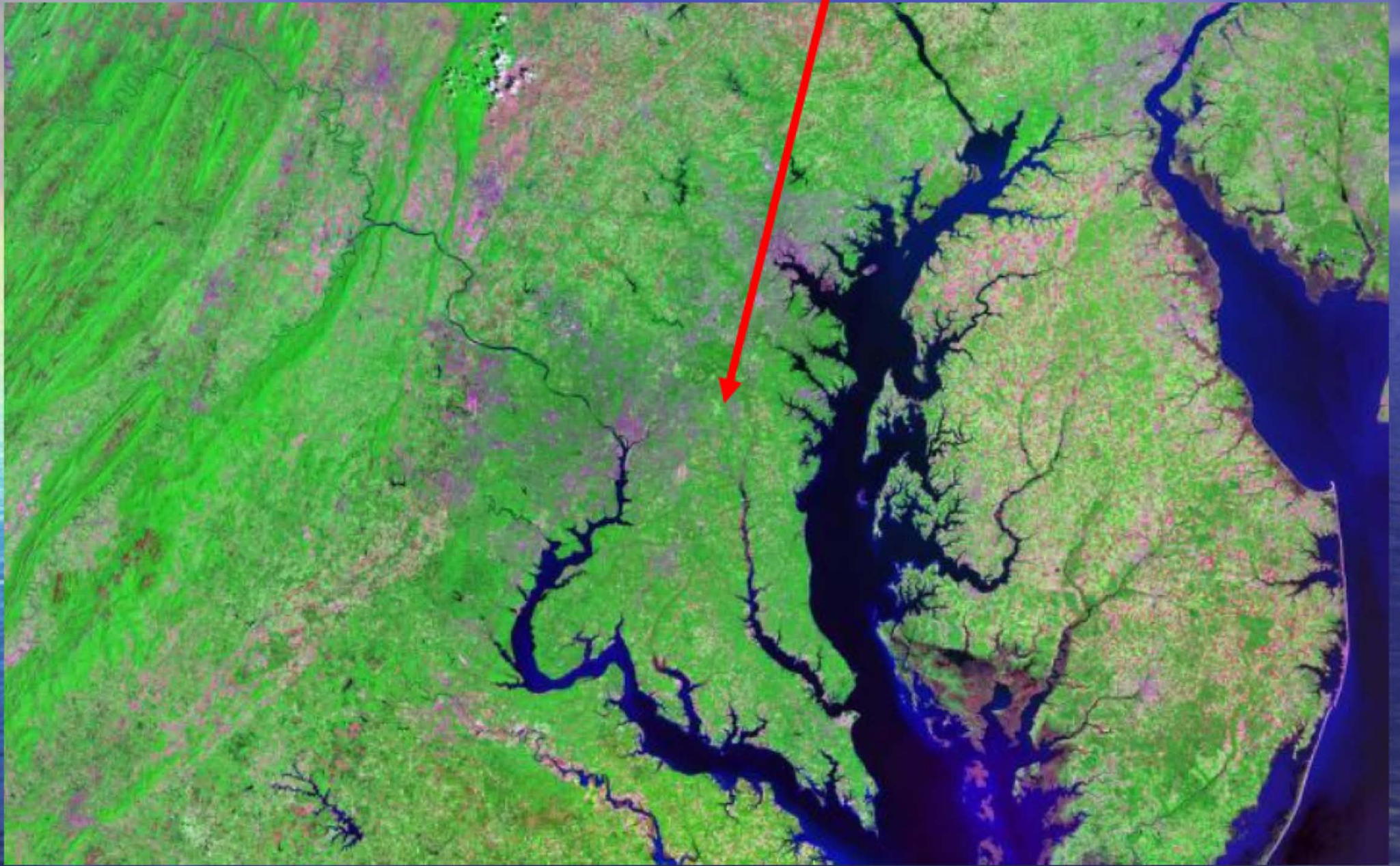




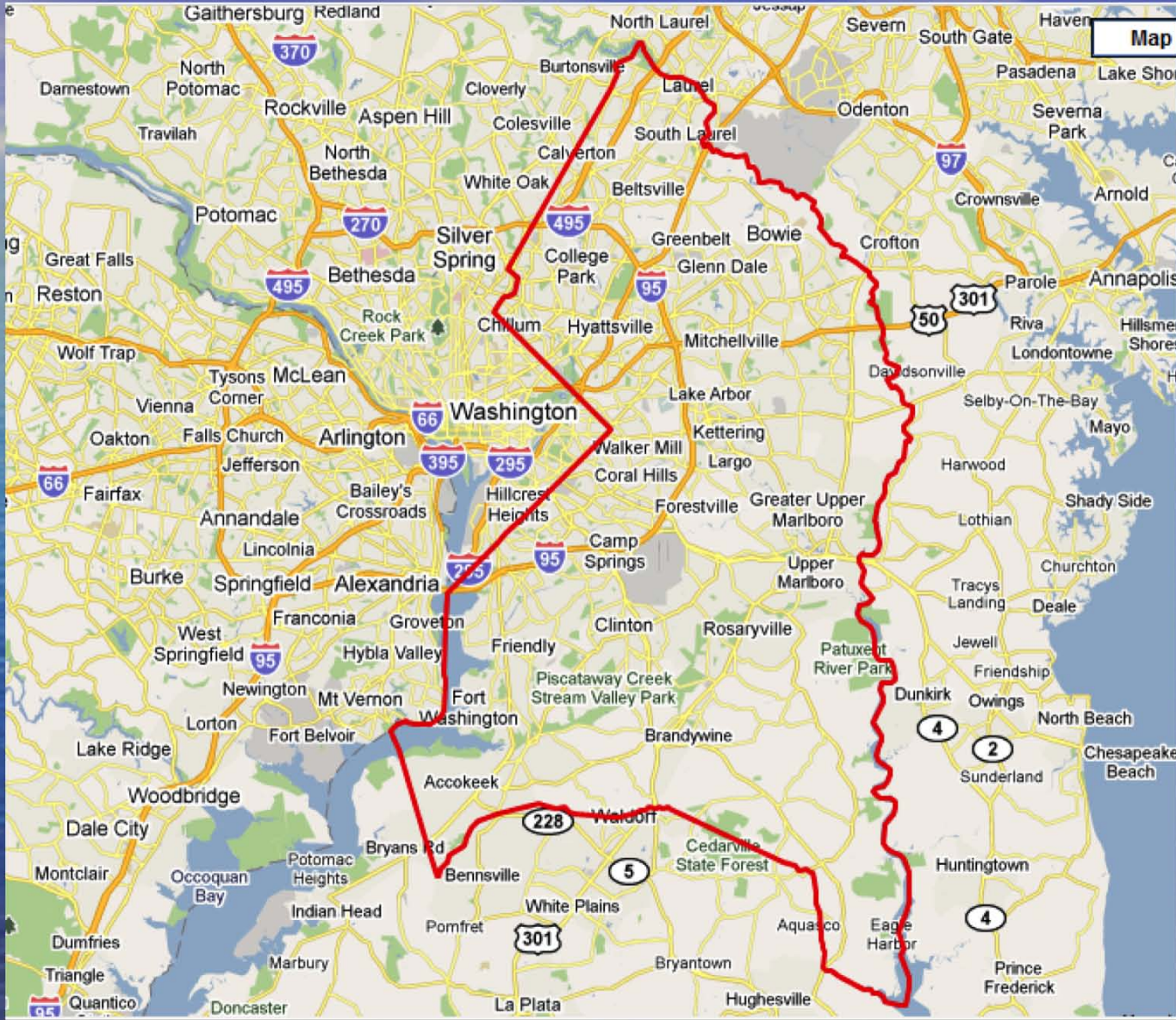
Green Streets as Community Spaces

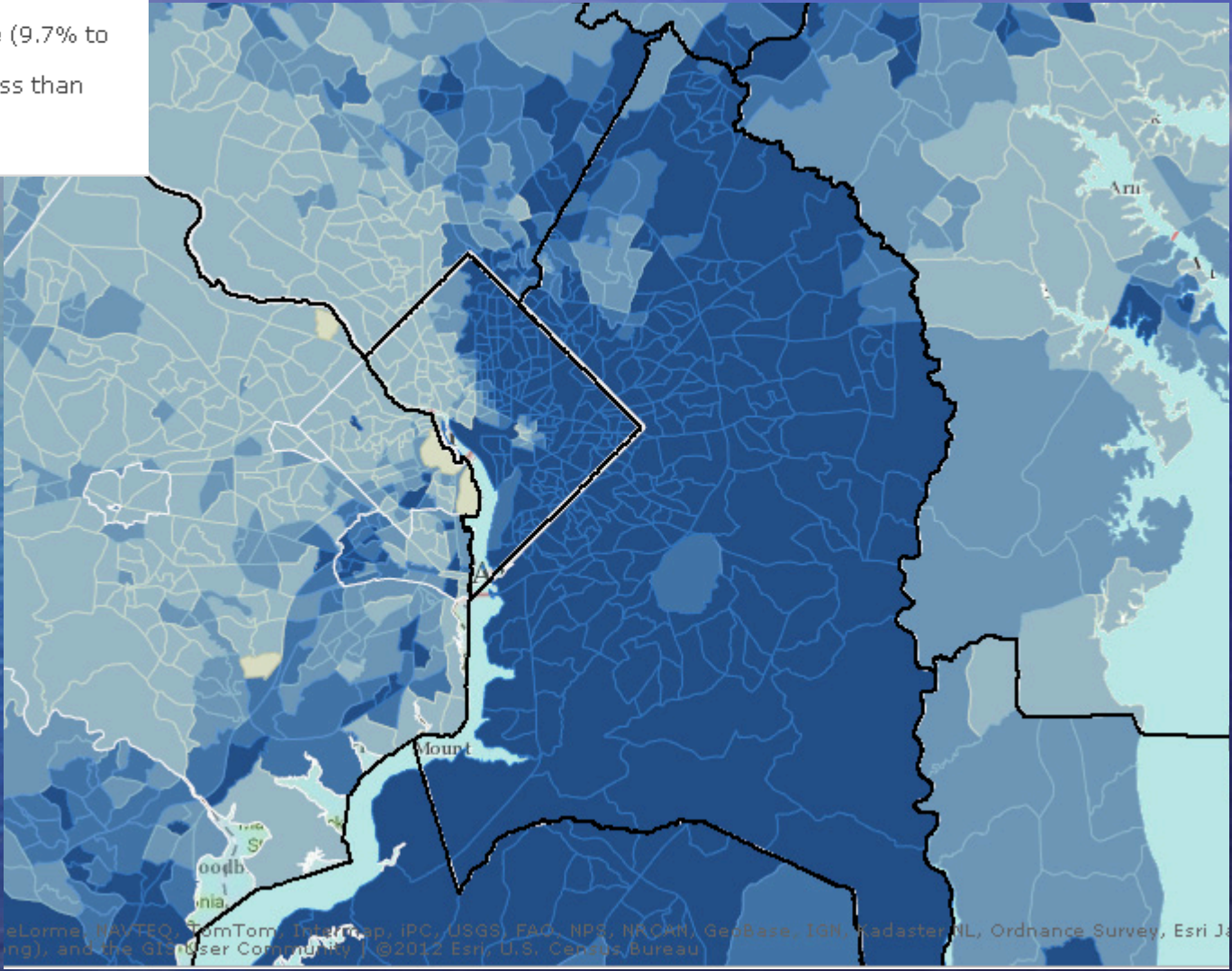
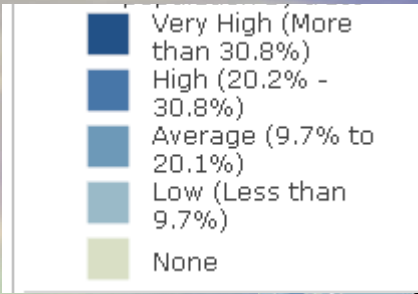
Adam Ortiz
Town of Edmonston &
Prince George's County
Maryland





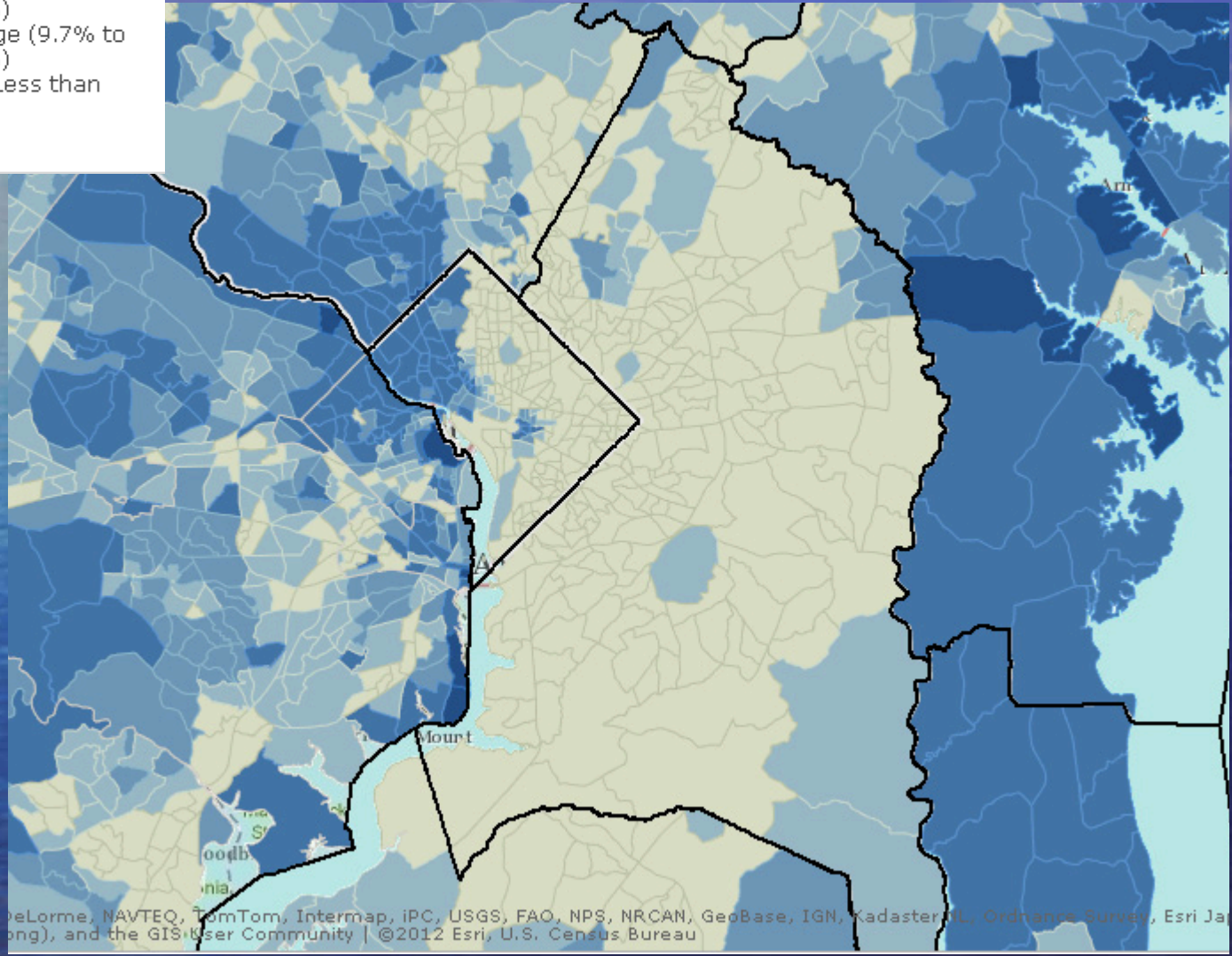
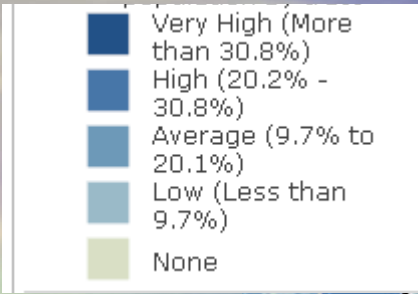
Key Point:
Everything is connected





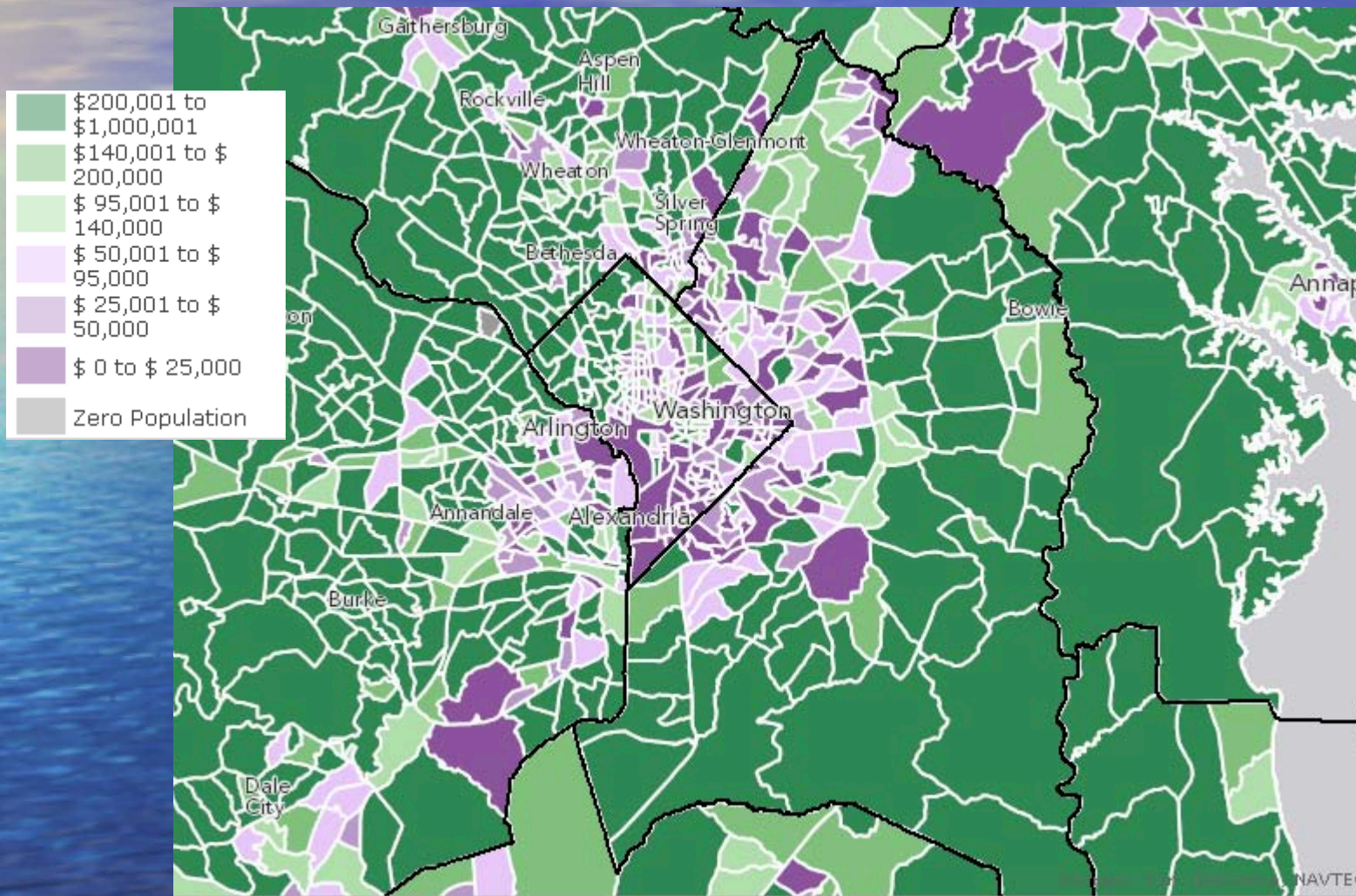
eLorme, NAVTEQ, TomTom, Intermap, iPC, USGS, FAO, MPS, NPCK, Geobase, IGN, Cadaster NL, Ordnance Survey, Esri J...
 ing), and the GIS User Community | ©2012 Esri, U.S. Census Bureau

Percent Black or African American

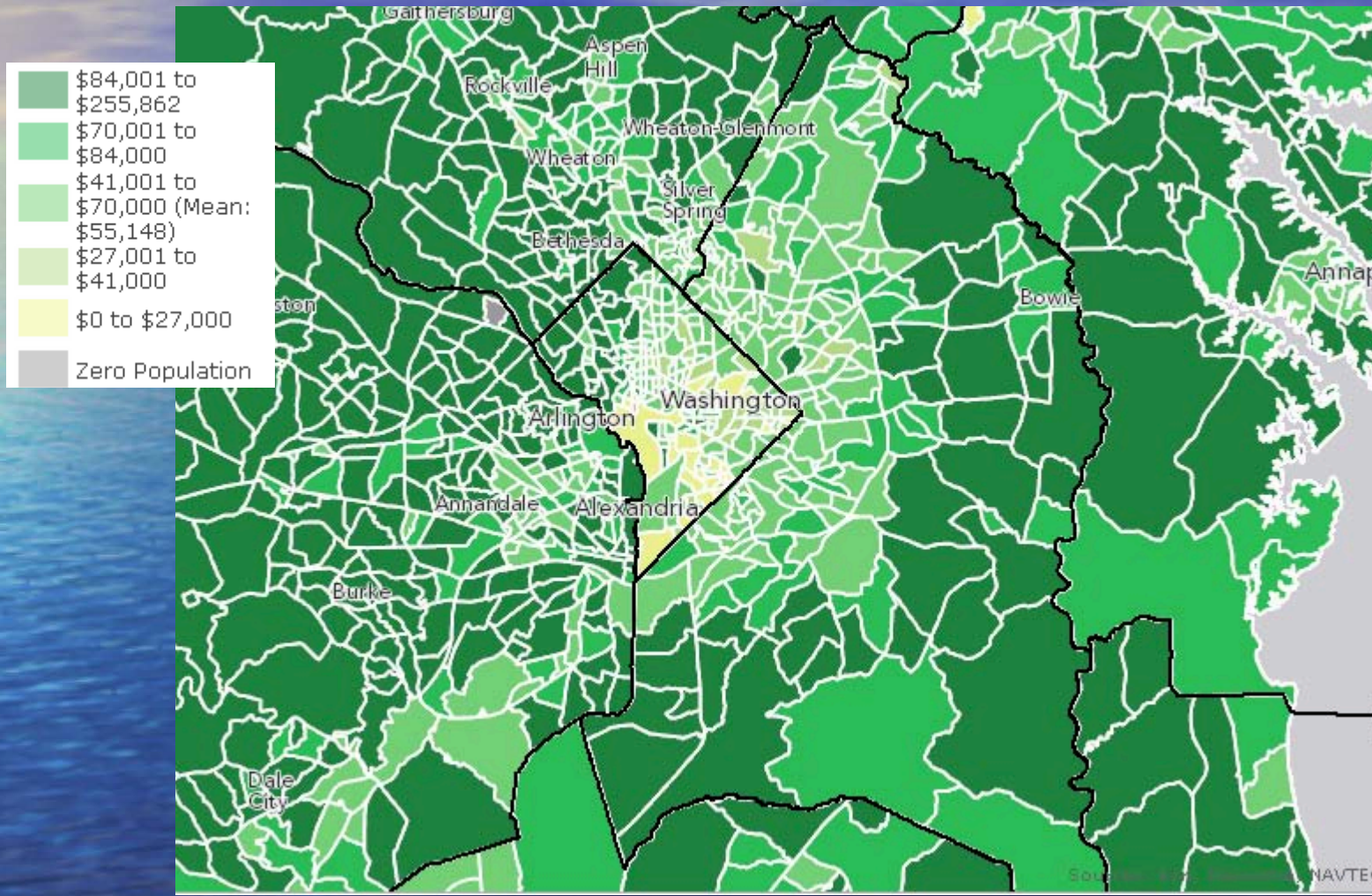


DeLorme, NAVTEQ, TomTom, Intermap, IPC, USGS, FAO, NPS, NRCAN, GeoBase, IGN, Kadaster NL, Ordnance Survey, Esri Japan (Tokyo), and the GIS User Community | ©2012 Esri, U.S. Census Bureau

Percent Black or African American



Median Net Worth



Median Household Income



Anacostia River Watershed



Key Point:

Environmentalism =
our basic responsibility



Anacostia River



*Photos courtesy of
Anacostia Watershed Society*





*Photos courtesy of
Anacostia Watershed Society*



Key Point:
There is a downstream



Key Point:
Everything is connected

Early Innovation FY2002 LID Project Prince George's County





Montgomery
County, MD

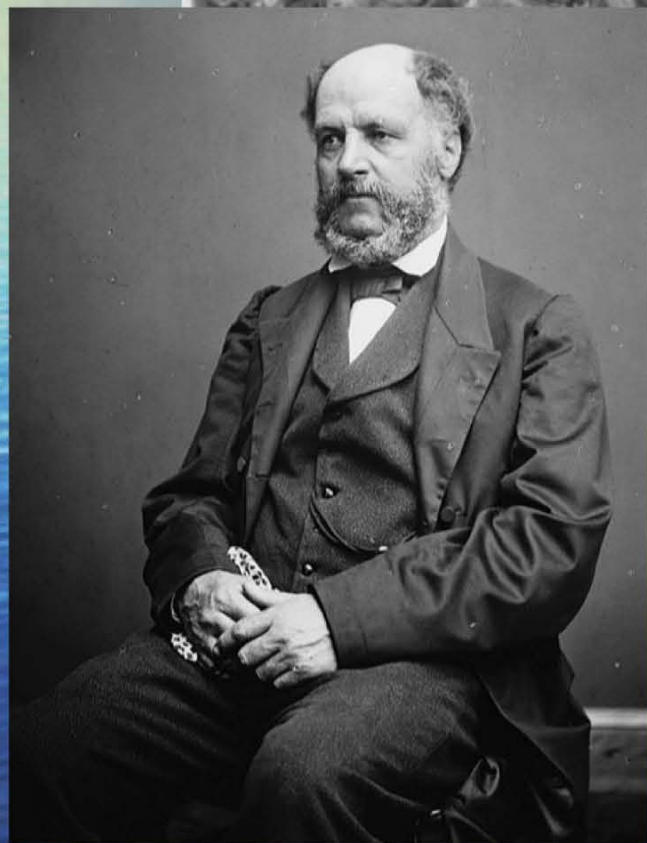
Edmonston, MD

Prince George's
County, MD

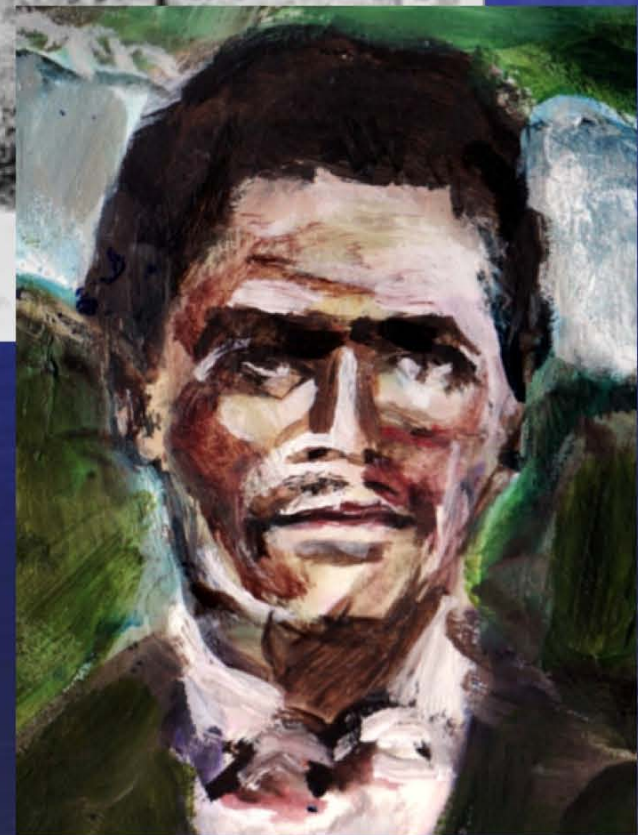
D.C.

Virginia

Anacostia Watershed



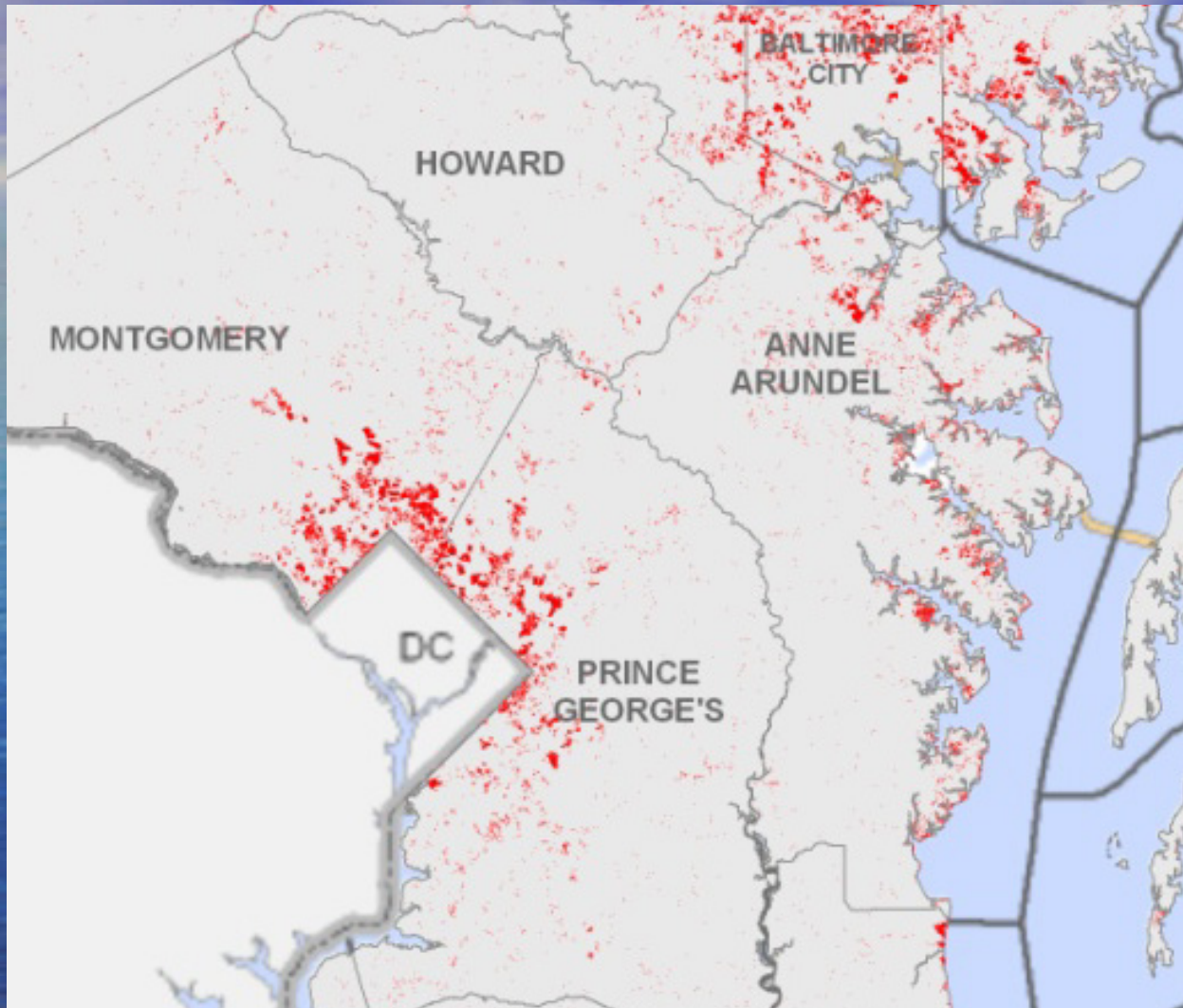
Charles Benedict Calvert



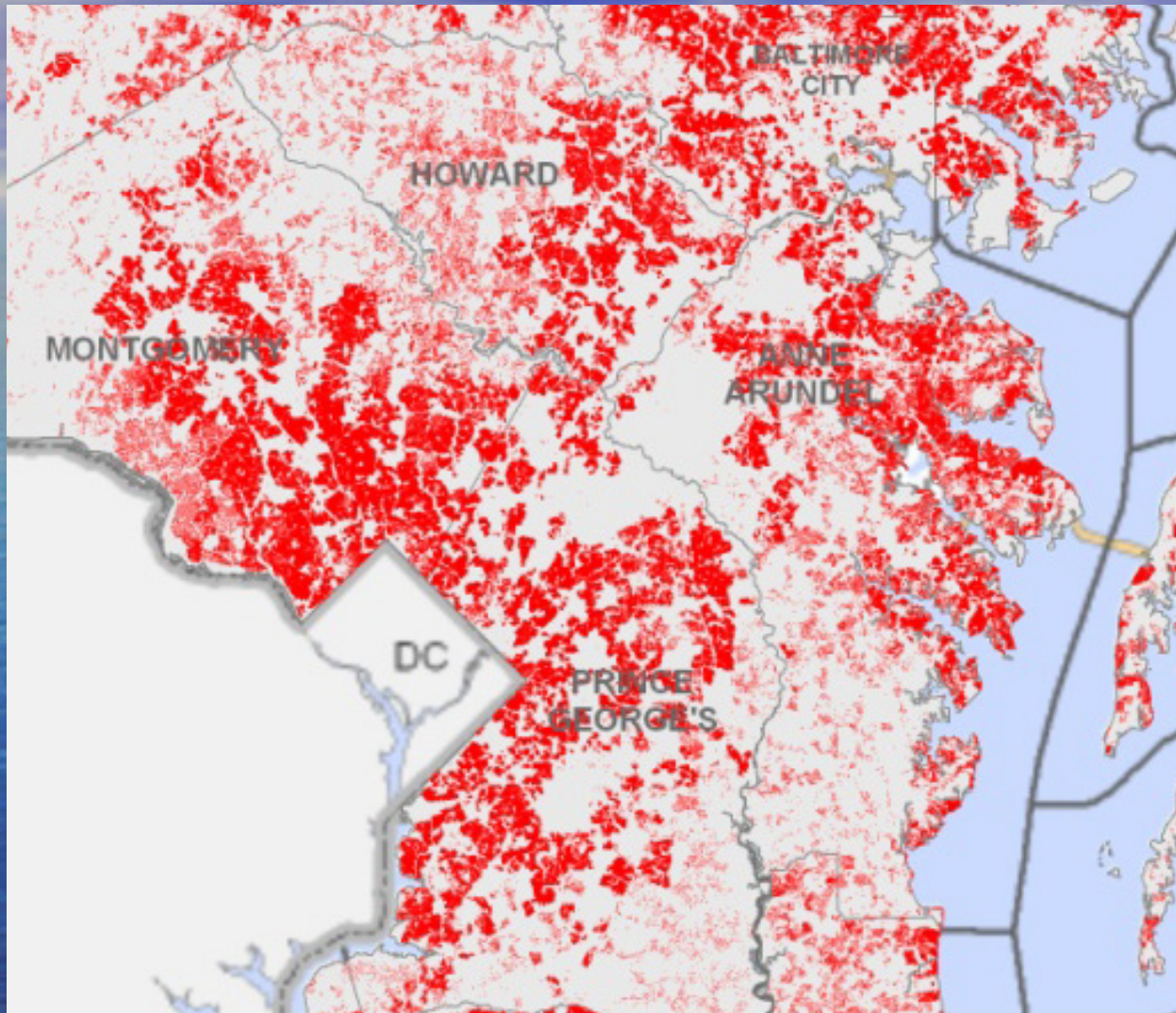
Adam Frances Plummer



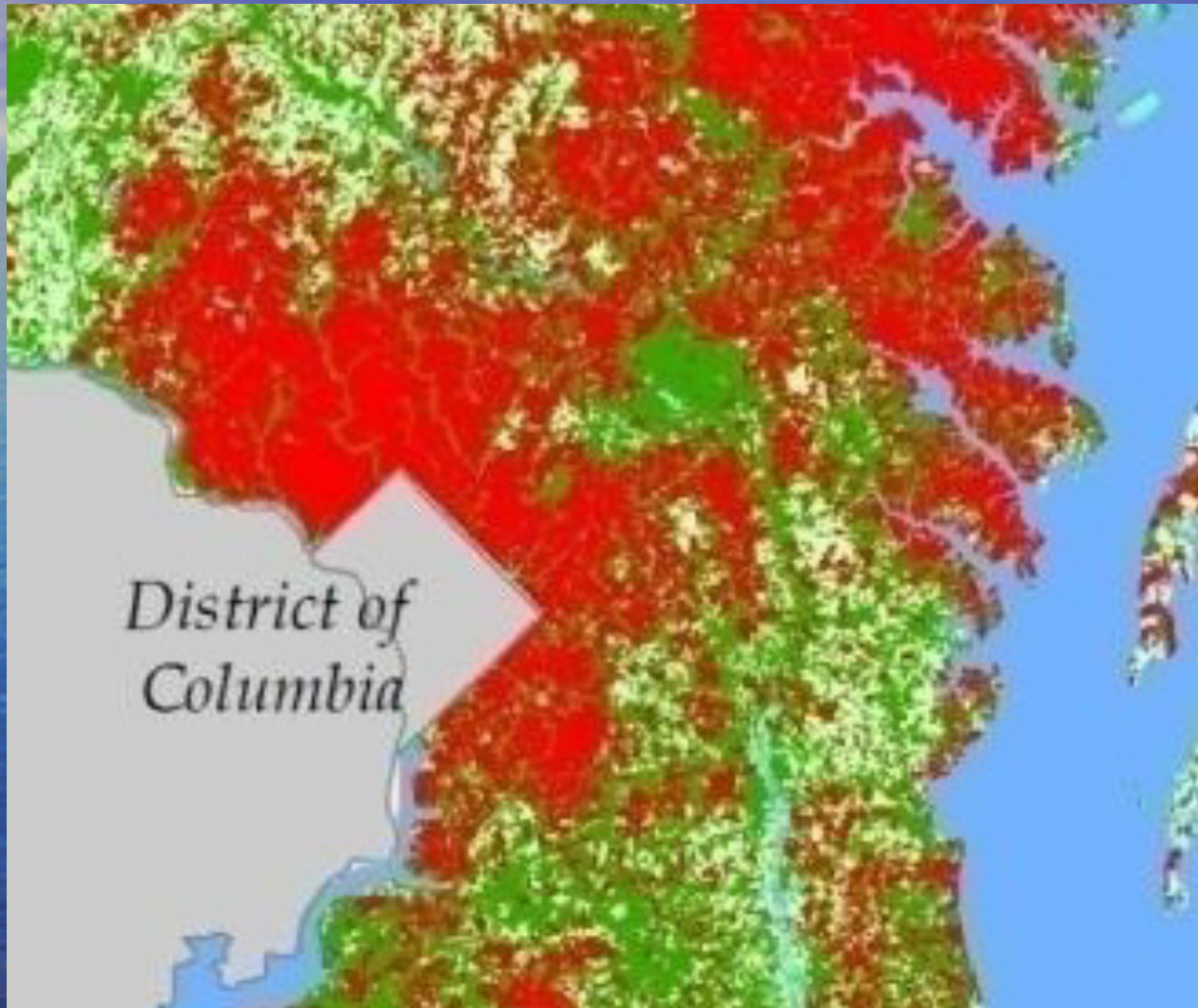
Key Point:
History lives.



Residential Development: 1949



Residential Development: 2008



Total Developed Land Cover









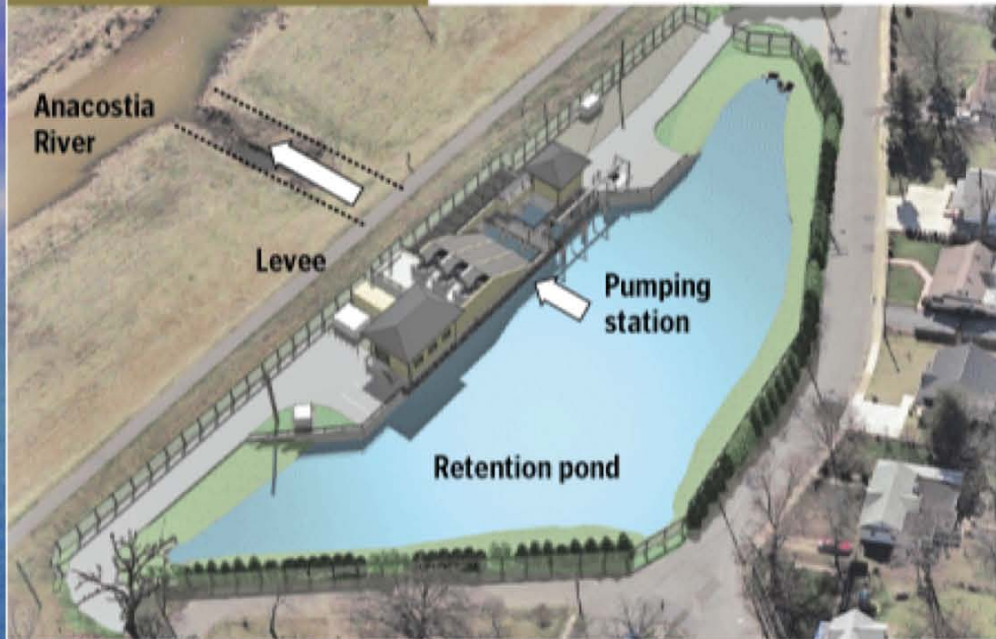
Key Point:
There is a downstream





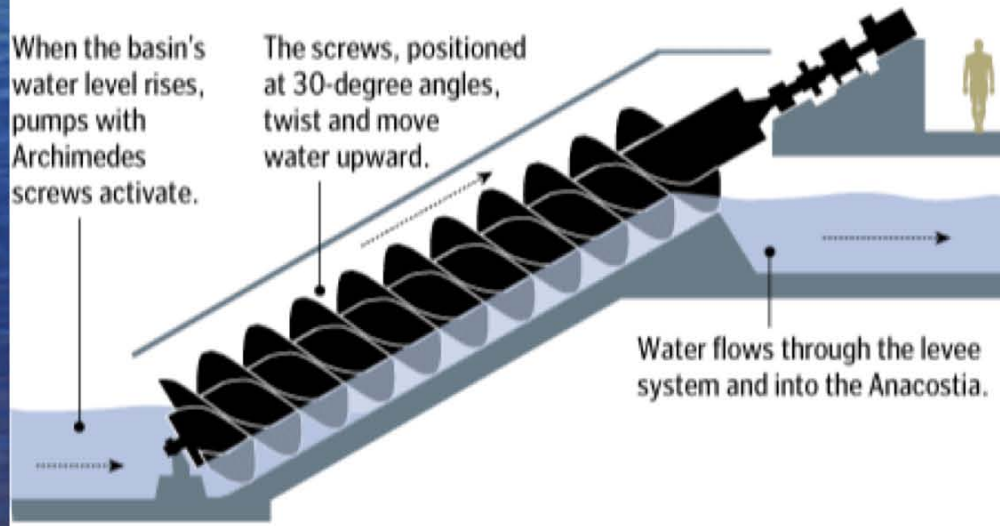


Edmonston pumping station



When the basin's water level rises, pumps with Archimedes screws activate.

The screws, positioned at 30-degree angles, twist and move water upward.



Water flows through the levee system and into the Anacostia.



Photo credits: Washington Post





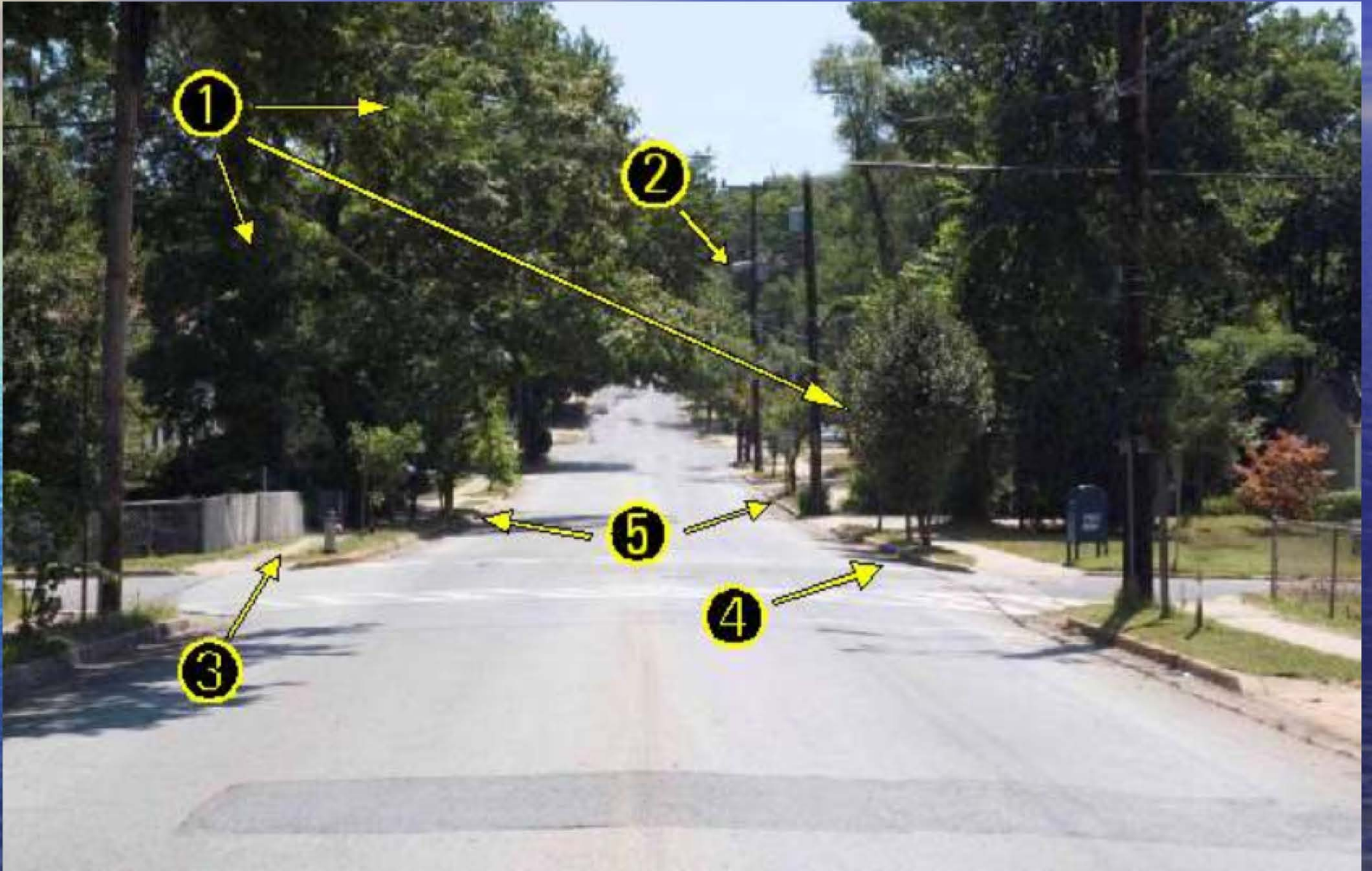


Key Point:

Streets are ~~car~~ community
spaces.



Key Point:
Everything is connected







Key Point:
Everything is connected

Partnerships

Seed funding and administration: **The Chesapeake Bay Trust**

Environmental Engineering: **The Low Impact Development Center**
(Beltsville, MD)

ARRA Support: **US EPA, Region III**

ARRA Support: **MD Department of Environment**

Landscape Design: **Neighborhood Design Center**
(Riverdale Park, MD)

General Engineering: **G&C Consultants** (Beltsville, MD)

Contractor: **VMP Construction** (Lanham, MD)

















"Green Use Transfer"

In many towns and cities, the public space available for improvements is limited unless eminent domain is used. Here, the vehicle lane has been narrowed substantially, freeing approximately four feet of road width to be transferred for greener use without taking any private land.

Sidewalks, bike lanes and raingardens will be installed where vehicle pavement was before.

*4700 block, Decatur Street
Looking East*



Key Point:

Streets are ~~car~~ community spaces.



Local Green Job Creation

- \$1.4M total project cost
- **70%** spent on local business (<25mi)
- **60%** spent on certified minority-owned firms



Sustainability

Stormwater Control

- LED lights saving **70%** in energy costs
- Wind power saving **15%**
- Substantial increase in biker and walkers
- **90%** of street surface goes is handled by raingardens and permeable pavement
- Community unity and pride

Ripple Effects

- Prince George's County: FY12 \$17M Green Street Fund
- EPA: Green Streets, Green Jobs, Green Towns Initiative
- Chesapeake Bay Trust: Green Street Fund for 9 mod-low income communities for green streets / year





Key Point:
Everything is connected



Key Point:
Everything is connected